

Drop-Off/Pick Up Procedures & Map – UPDATED 10-14-2020

At this time, visitors and volunteers are not permitted on campus. This greatly impacts the first day of dropping of students for school. I must ask you to remain in your vehicle as you drop off your children. There will be Arrowhead staff members greeting students as they get out of cars, arrive through gates, and get off buses. Teachers and staff will help students find their classrooms as students will go directly to classrooms upon arrival.

Drop off time is 8:30 am. Students who are eating breakfast at school may arrive as early as 8:20. All students who wish to eat breakfast will go directly to the cafeteria upon arrival.

Pick up time is 3:30 pm (Kindergarten will start dismissing at 3:20). Exceptions: Friday Early Release days dismiss at 2:00. Half Days dismiss @ 12:05.

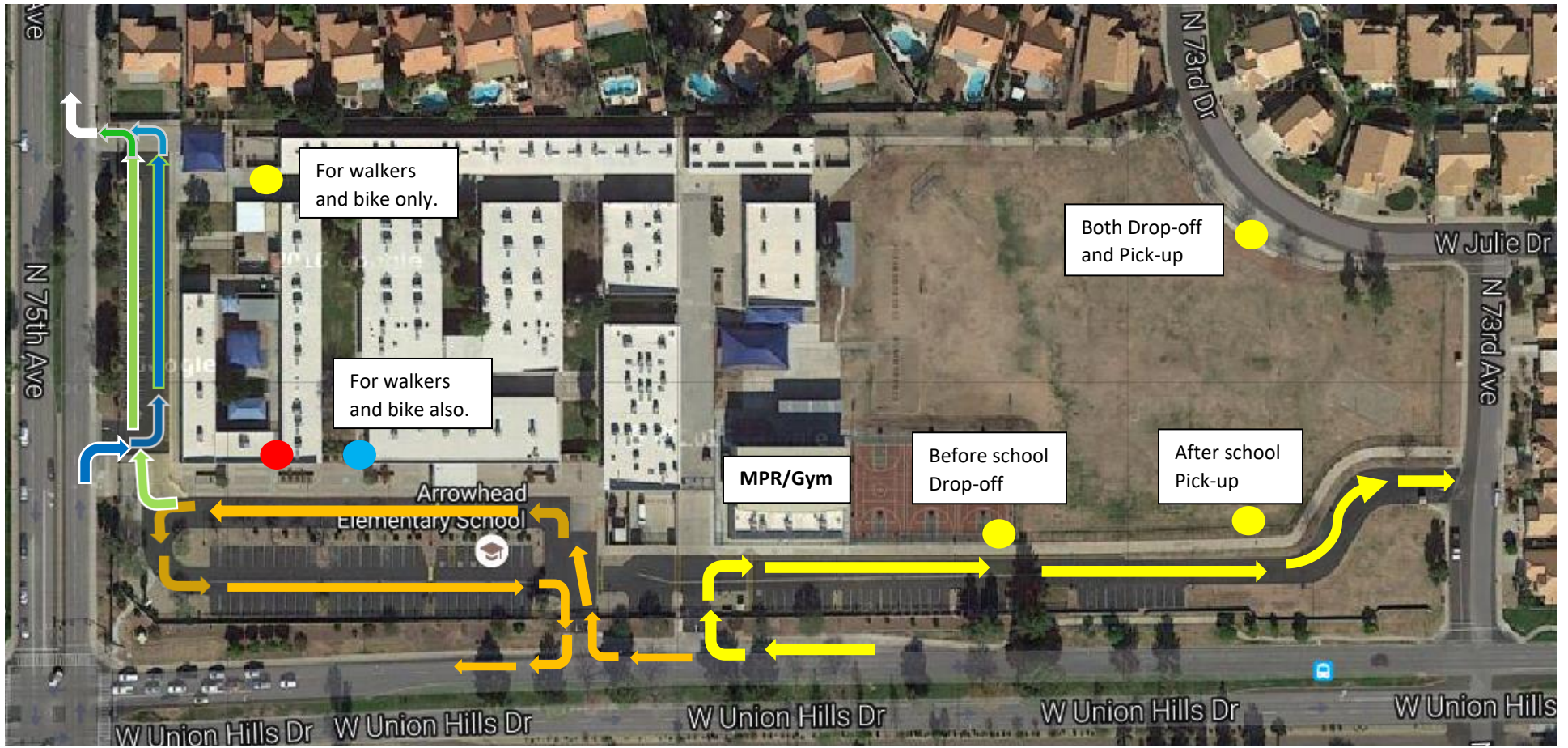
Here are the drop-off and pick-up procedures:

- Pre-School, Kindergarten, 1st Grade and their siblings are to be dropped off and picked up in the West Parking Lot where the office is located.
- 2nd - 6th grade students are to be dropped off and picked up in the East Parking Lot where the Gymnasium is located.
- Another option for drop off / pick up is the back gate off of 73rd and Julie. Check out the map for further clarification.
- Please follow the one-way flow of our parking lot, utilizing parking spaces if you need to leave your vehicle for any reason.
- **Please do not leave your vehicle unattended while parked in the fire lane. Please do not ask your child to cross traffic lanes to join you in your car.** This is very dangerous! A second exit from the south-west parking lot has been added which will allow cars to exit onto 75th Avenue using a right turn only.

We greatly appreciate your help in keeping all of the children safe.

Please see map below. Thanks.

Arrowhead Elementary School Drop-off and Pick-up Gates



Remember to be safe/courteous. Drop-off is at 8:30 am and Pick-up is at 3:30 pm on normal days, 2:00 pm on Early Release Fridays, and 12:05 on Half days.

● = Kindergarten Pick-up Gate (after school)

● = Kindergarten Drop-off Gate (before school) and 1st Grade Pick-up and Drop-off Gate (and siblings too). This gate is also for 2nd – 6th graders who walk or bike to school from the area south and west of the school.

● = 2nd – 6th Grade Gates (Northwest Gate by Bus Area – for walkers and bicycle riders only; Basketball Court (before school only)/Field Gate (after school only); 73rd Dr. and Julie Gate (before and after school))

→ = Preschool, Kindergarten, 1st Grade Drop-off/Pick-up Path through their parking lot

→ = 2nd – 6th Grades Drop-off/Pick-up Path through their parking lot

→ = Drop-off/Pick-up vehicle relief path. ONLY open during before school drop off and after school pick up. Otherwise, the gate will be closed.

Please be careful when using. One must yield to busses coming through the Bus Lane. Will be right turn only to exit.

→ = Bus Lane. For busses ONLY.